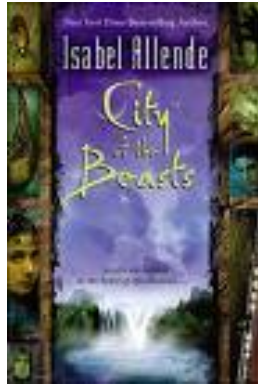


Study guide for **CITY OF THE BEASTS** BY ISABEL ALLENDE



- **FORMAT OF THE TEST:**

There will be 30 questions and you will be required to answer 20 of them each worth 5 points. Short, specific explanations will be required. Vague generalities will not count for much.

- **WHAT WE HOPE YOU GATHER FROM YOUR READING OF THIS BOOK:**

- ❖ **The principal characters** who share the adventure and the major roles they play in the adventure.

*** You are **not** expected to memorize their names – because there are many characters and often with difficult names – but, once identified, you are expected to be able to explain what their roles were in the adventure, their roles with each other and characteristics which defined them.*

- ❖ **Their mission:** the mission of the group.
- ❖ **The location:** where all the action takes place.
And, a general description of the region.
- ❖ **Some Indian terms** that are important and are used constantly throughout the novel Ex: *nahab*
- ❖ **Alex and Nadia:**
The essential contributions that these two main characters add to the adventure. Keep in mind what each one's major "trial" involves and requires of them.

❖ **People of the Mist:**

Their principal characteristics; their relationship with the Beasts; and eventually, their relationship with the members of the expedition.

❖ **Message of the author, Isabel Allende:**

Think about what she wanted the reader to “ponder” after finishing her book.

❖ **Outstanding event:**

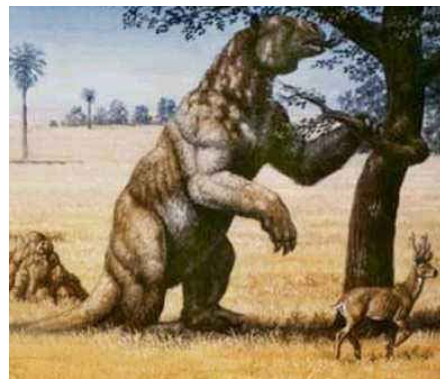
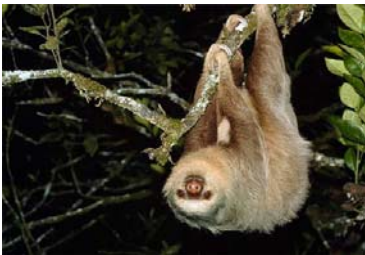
Give some thought about what particular event really stood out for you while reading the novel.

❖ **Overall reaction to the book:**

Positive or negative, your feelings and thoughts about the novel when you finished.

HELPFUL HINT:

As you read the book and/or shortly thereafter, be sure to take some notes under the various categories. They will be helpful to have in September when you want to do some reviewing before the test.



¡ADIÓS! ¡BUENA SUERTE!